



The New Generation Of
Digital

25 X 45 CM
Wall Tiles



SEGAL CERAMIC PVT. LTD.

8/A National Highway, 20 Nala Road, Dhuva - 363 622, Tal - Wankaner (Guj.) India.

Tel. : 02828 - 287871 / 72 | Fax - 02828 - 2877877 , Mo. : +91 76000 15350

Export Inquiry : +91 96620 89945

| Web : www.segalceramic.co.in E-mail : segaldigital@yahoo.com |

Creative
TILES





COMPANY PROFILE

It is a matter of immense pride that the Four year old **SEGAL CERAMIC** has achieved its goals with the help of Distributors dealers and customers. Located at Morbi, we manufacture digital wall tiles that not only meet the customer's demand, but exceed them. We always said in our previous slogan, "The Best you can get ...". We ensured that you get the best. customers get best products that last long, Dealers and distributors get best quality business, all in all, you will get the best.

We have just moved a step ahead in making the best everlasting. We launch new range every quattor and we are now committed to rolling out range that will surely make the buyers happy. our products will not only have delightful designs but they will make your interiors elegant and make them last forever. As for distributors, we are on a mission to make your profitable business last forever as well. in short we are into everlasting elegance for all.

We are planning to grow fast and we are sure our channel partners that are dealers and distributors also will grow with us. Come let us make our huge profitable tie up an everlasting one...

246 x 450 MM
digital wall tiles

glossy
Light Dark 04

glossy
Dolphin & Cartoon 21

glossy
Kitchen 22

glossy
Flower
Concept 27

matt
Kitchen 28

matt
Light Dark 30

glossy
Elevation 38

matt
Elevation 40

digital

246 x 450 MM
walltiles

colourfull print

DIGITAL

25 X 45 CM

Wall Tiles

Natures

INNOVATION

Wall Tiles

collection



A glossy tiles with a glossy surface. In certain light environments glossy tiles better color intensity and contrast Looks. The primary disadvantage of these tiles is their tendency to reflect any external light, often resulting in an undesirable glare. So Also Called Glossy Tiles Provided Mirror Work..

GLOSSY

Collection

EROZZI



Wall Tiles

246 X 450 mm

Glossy

04/05



2101 L



2101 HL-A



2101 D



2101 F



2102 L



2102 HL-A



2102 D



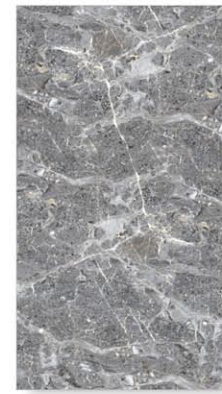
2102 F



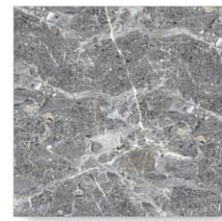
2103 L



2103 HL-A



2103 D



2103 F



2104 L



2104 HL-A



2104 HL-B



2104 D

Wall Tiles



2105 L



2105 HL-A



2105 D



2105 F



2106 L



2106 HL-A



2106 D



2106 F



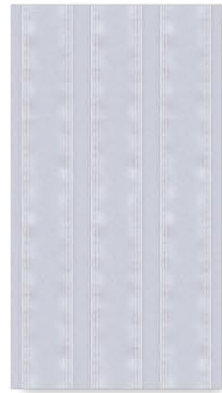


Wall Tiles

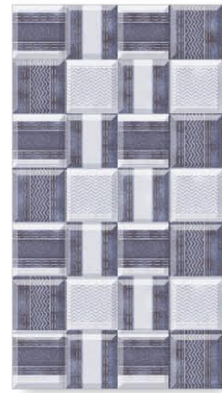
246 X 450 mm

Glossy

06/07



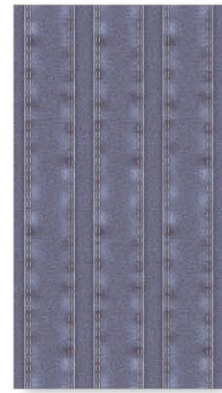
2107 L



2107 HL-A



2107 HL-B



2107 D



2108 L



2108 HL-A



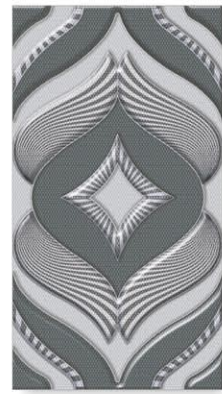
2108 D



2108 F



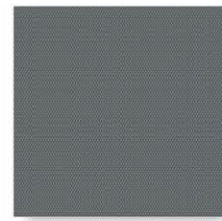
2109 L



2109 HL-A



2109 D



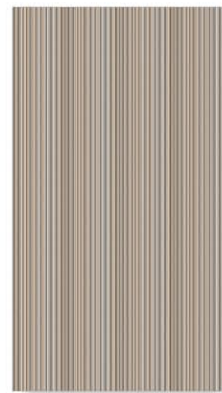
2109 F



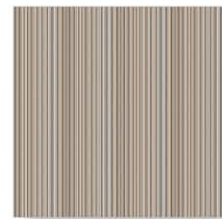
2110 L



2110 HL-A



2110 D



2110 F

Wall Tiles



2111 L



2111 HL-A



2111 HL-B



2111 D



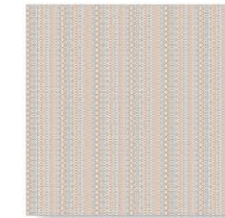
2112 L



2112 HL-A



2112 D



2112 F





Wall Tiles

246 X 450 mm

Glossy

08/09



2113 L



2113 HL-A



2113 D



2113 F



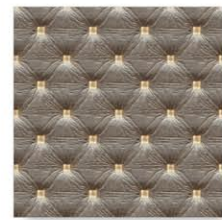
2114 L



2114 HL-A



2114 D



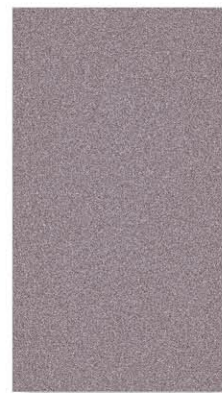
2114 F



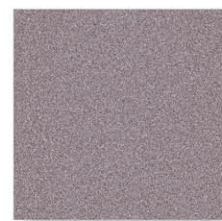
2115 L



2115 HL-A



2115 D



2115 F



2116 L



2116 HL-A



2116 D



2116 F

Wall Tiles



2117 L



2117 HL-A



2117 HL-B



2117 D



2118 L



2118 HL-A



2118 HL-B



2118 D





Wall Tiles

Glossy | 246 X 450 mm



2119 L



2119 HL-A



2119 D



2119 F



2120 L



2120 HL-A



2120 D



2120 F



2121 L



2121 HL-A



2121 HL-B



2121 D



2122 L



2122 HL-A



2122 D



2122 F

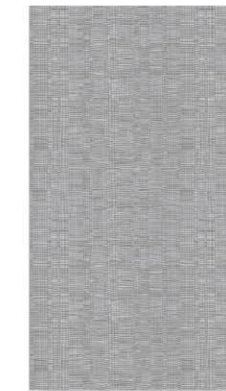
Wall Tiles



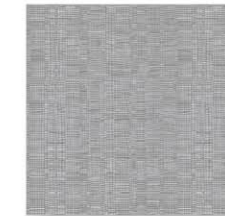
2123 L



2123 HL-A



2123 D



2123 F



2124 L



2124 HL-A



2124 D



2124 F





Wall Tiles

246 X 450 mm

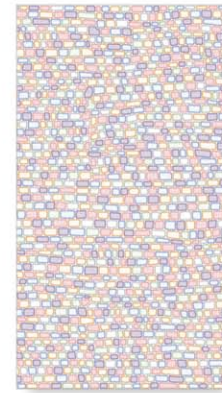
Glossy



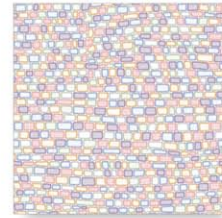
2125 L



2125 HL-A



2125 D



2125 F



2126 L



2126 HL-A



2126 HL-B



2126 D



2127 L



2127 HL-A



2127 D



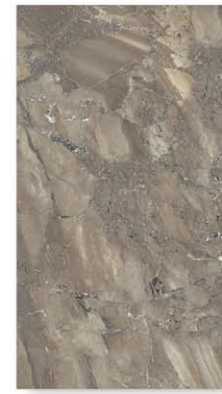
2127 F



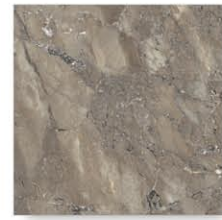
2128 L



2128 HL-A



2128 D



2128 F

Wall Tiles



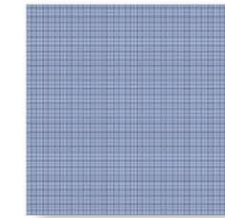
2129 L



2129 HL-A



2129 D



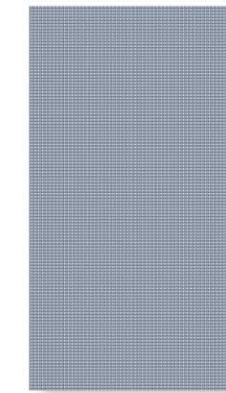
2129 F



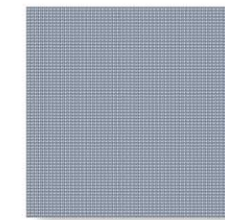
2130 L



2130 HL-A



2130 D



2130 F





Wall Tiles

| 246 X 450 mm

| Glossy



2131 L



2131 HL-A



2131 D



2131 F



2132 L



2132 HL-A



2132 D



2132 F



2133 L



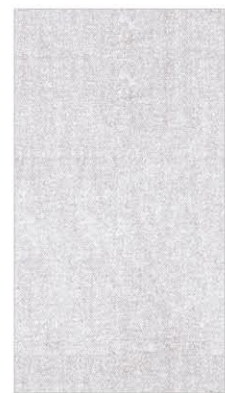
2133 HL-A



2133 D



2133 F



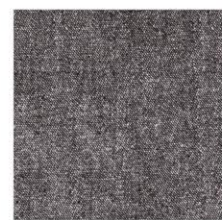
2134 L



2134 HL-A



2134 D



2134 F

Wall Tiles



2135 L



2135 HL-A



2135 D



2135 F



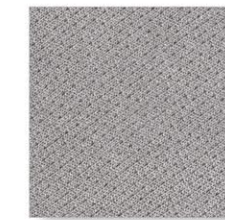
2136 L



2136 HL-A



2136 D



2136 F





Wall Tiles

246 X 450 mm

16/17



2137 L



2137 HL-A



2137 HL-B



2137 D



2138 L



2138 HL-A



2138 D



2138 F



2139 L



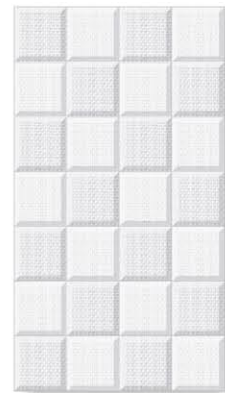
2139 HL-A



2139 D



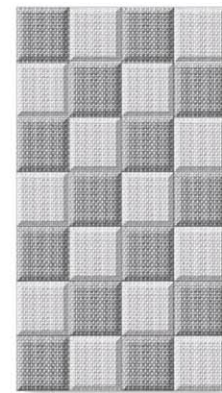
2139 F



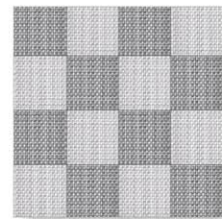
2140 L



2140 HL-A



2140 D



2140 F

Wall Tiles



2141 L



2141 HL-A



2141 D



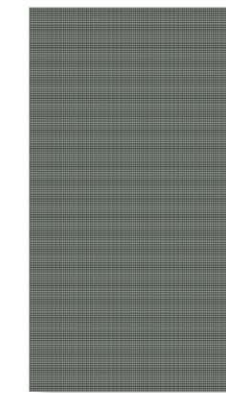
2141 F



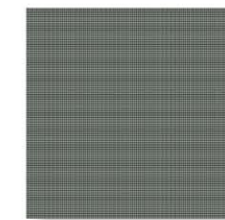
2142 L



2142 HL-A



2142 D



2142 F





Wall Tiles

246 X 450 mm

Glossy



2143 L



2143 HL-A



2143 D



2143 F



2144 L



2144 HL-A



2144 L



2144 F



2145 L



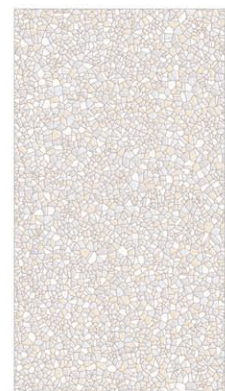
2145 HL-A



2145 D



2145 F



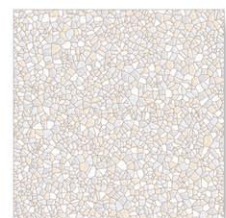
2146 L



2146 HL-A



2146 L



2146 F

Wall Tiles



2147 L



2147 HL-A



2147 D

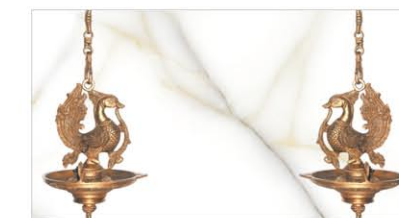


2147 F

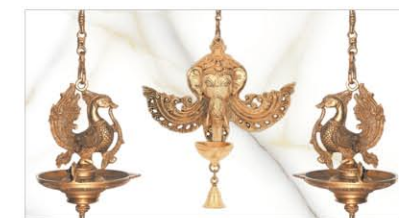
DIPA



Dipa



Dipa HL-A



Dipa HL-B





Wall Tiles

246 X 450 mm

Glossy

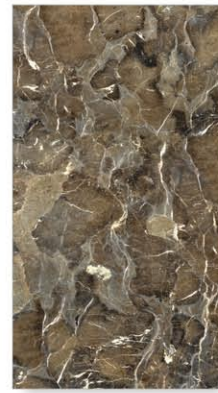
20/21



2148 L



2148 HL-A



2148 D



2148 F



2149 L



2149 HL-A



2149 D



2149 F



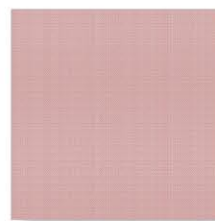
2150 L



2150 HL-A



2150 D



2150 F



2151 L



2151 HL-A

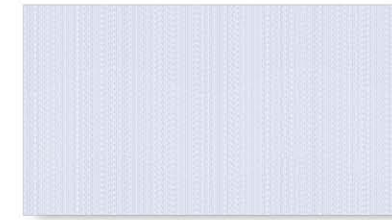


2151 D



2151 F

Wall Tiles



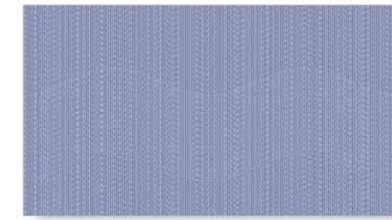
Blue L



Dolphin - A



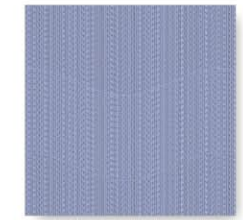
Cartoon - A



Blue D



Dolphin - B



Blue F



CHOKO



Choko



Choko HL-A



Choko HL-B



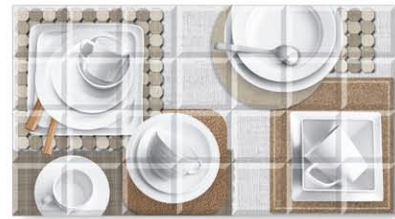
Choko HL-C



Roca



Roca HL-A



Roca HL-B



Roca HL-C



Roca HL-D

ROCA





Wall Tiles

246 X 450 m m

Glossy

MARBO



Marbo



Marbo HL-A



Marbo HL-B



Sober



Sober HL-A



Sober HL-B



Sober HL-C

SOBER

Wall Tiles

MICA



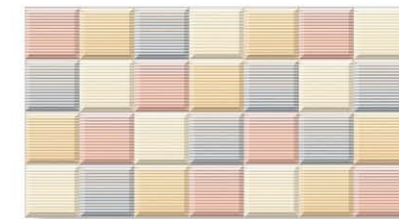
Mica



Mica HL-B



Mica HL-A



Dica

DICA



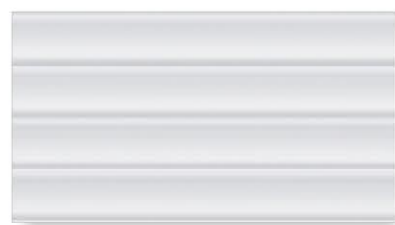
24/25



246 X 450 mm

Wall Tiles

Glossy



Spice



Spice HL-A

SPICE



Spice HL-B



Spice HL-C



26/27



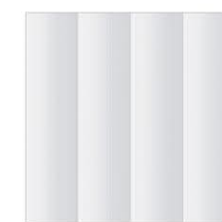
Spice



Flower - A



Flower - B



Spice F



DIGITAL

25 X 45 CM

Wall Tiles

MATT
collection

Natures
ATTRACTION
Wall Tiles

If you like playing with object, or like drawing, then **matt** is for you, Specialists in the design and sheeted supply of victorian **matt** tiles contemporary wall tiles. "SEGAL" **matt** tiles are lacking on crisp matt and lively patterns.

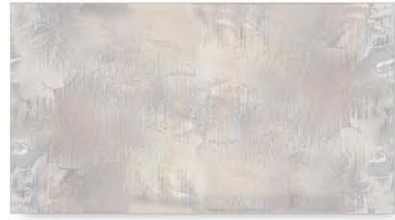


Wall Tiles

246 X 450 mm

Matt

TOMO



Tomo L



Tomo D



Tomo HL-A



Tomo HL-C



Tomo HL-B



Tomo HL-D



Tomo HL-E

KITCHEN

COLLECTION





Wall Tiles

246 X 450 mm

Matt

30/31



5101 L



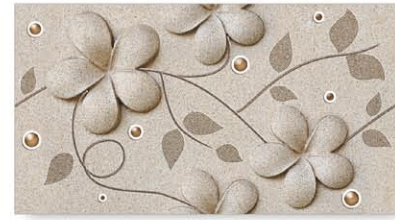
5102 L



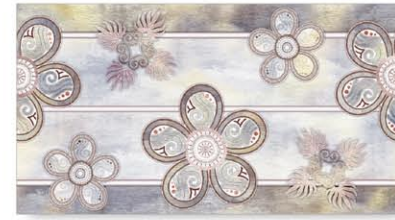
5104 L



5101 HL-A



5102 HL-A



5104 HL-A



5101 D



5102 D



5104 D



5101 F



5102 F



5104 F



5103 L



5103 HL-A



5103 D



5103 HL-B



5103 F

Wall Tiles



5105 L



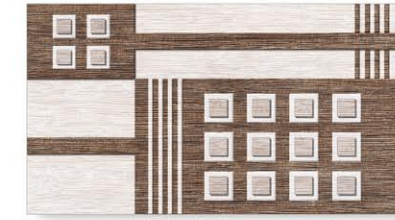
5106 L



5107 L



5105 HL-A



5106 HL-A



5107 HL-A



5105 D



5106 D



5107 D



5105 F



5106 F



5107 F





Wall Tiles

246 X 450 mm

Matt

32/33



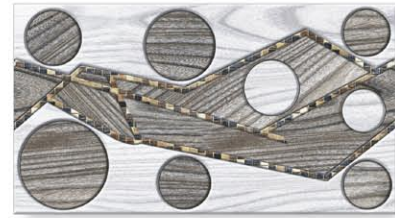
5108 L



5110 L



5111 L



5108 HL-A



5110 HL-A



5111 HL-A



5108 D



5110 D



5111 D



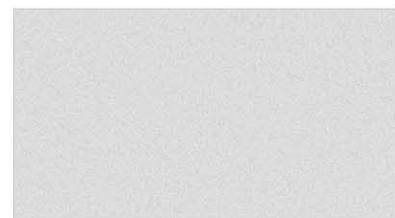
5108 F



5110 F



5111 F



5109 L



5109 HL-A



5109 D



5109 HL-B



5109 F

Wall Tiles



5112 L



5113 L



5114 L



5112 HL-A



5113 HL-A



5114 HL-A



5112 HL-B



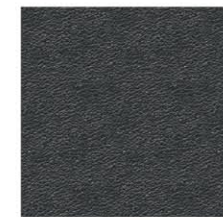
5113 D



5114 D



5112 D



5113 F



5114 F





Wall Tiles

246 X 450 mm

Matt

34/35



5115 L



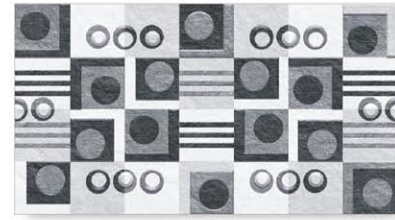
5117 L



5118 L



5115 HL-A



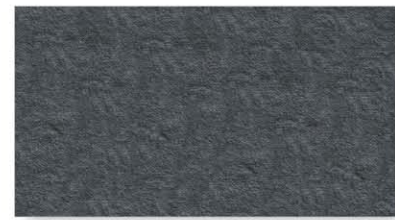
5117 HL-A



5118 HL-A



5115 D



5117 D



5118 D



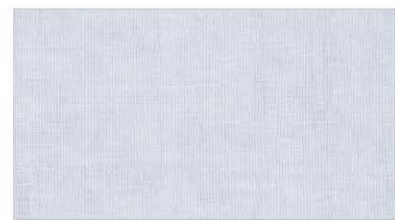
5115 F



5117 F



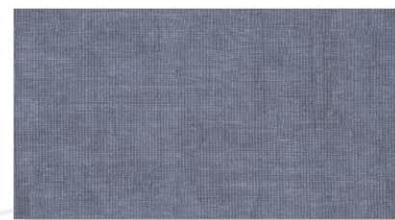
5118 F



5116 L



5116 HL-A



5116 D



5116 HL-B



5116 F

Wall Tiles



5119 L



5120 L



5121 L



5119 HL-A



5120 HL-A



5121 HL-A



5119 HL-B



5120 D



5121 D



5119 D



5120 F



5121 F





Wall Tiles

246 X 450 mm

Matt

36/37



5122 L



5124 L



5123 L



5122 HL-A



5124 HL-A



5123 HL-A



5122 D



5124 D



5123 HL-B



5122 F



5124 F



5123 D



5123 F



5125 L



5125 HL-A



5125 D



5125 F

Wall Tiles



5126 L



5126 HL



5126 D

5126 F





Wall Tiles
Glossy | 246 X 450 mm



EL 4101



EL 4102



EL 4103



EL 4104



EL 4105



EL 4106



EL 4107



EL 4108



EL 4109



Wall Tiles



EL 4110



EL 4111



EL 4112



EL 4113



EL 4114



EL 4115





Wall Tiles
Matt | 246 X 450 mm



EL 3101



EL 3102



EL 3103



EL 3104



EL 3105



EL 3106



EL 3107



EL 3108



EL 3109

Wall Tiles



EL 3110



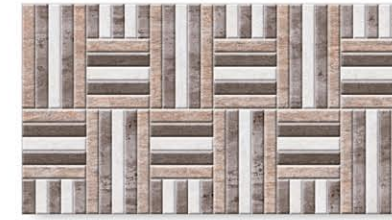
EL 3111



EL 3112



EL 3113



EL 3114



EL 3115



EL 3116



EL 3117



EL 3118



→ WALL TILES

Some wall tile glazes, particularly the more specialized effects used to create surface features and strong colours, are subject to crazing. This aspect is an inherent characteristic of the glazes and many occur after fixing but will not affect the performance of the tiles. Non-spacer tiles should be spaced by the use of readily available spacer pegs.

→ HIGHLY DECORATIVE TILES.

Care should be taken during installation and grouting to avoid damage. Abrasive cleaners and strong chemicals, which may harm the decoration, should not be used.

→ COLOURED GROUTS.

If coloured grouts are used then the manufacturer's instructions for use should be carefully followed. A trial area should be grouted before proceeding with the whole tiled area to check whether any staining of the tiles occurs. Segal Ceramic accepts no liability for staining or damage to tile surfaces incurred during grouting of the tiles. Generally the use of such grouts is not recommended with satin or Matt Glazed Products

→ GROUTING AND CLEANING.

Care should be taken during installation, particularly when grouting. To avoid scratching the glazed surface. Abrasive cleansers and strong chemicals that may harm the decoration should not be used.

→ FIXING LARGE FORMAT WALL TILES.

The large format wall tiles require spacing by the use of proprietary tile spacers. Nominal joint widths of 2 to 3 mm are recommended to ensure that the modular coordination is maintained. All backgrounds must be dry, flat and free from surface contamination. New backgrounds must have been allowed to dry for the appropriate length of time prior to the commencement of tiling. The background should be sufficiently strong and rigid to support the weight of the new tile work. Friable or weak backgrounds should be made good prior to tiling. Appropriate advice as to the suitability of walls in respect of tiling should be sought from a qualified person before commencing tiling. This is particularly important if the new tile work is over existing tiling. It is important that an appropriate adhesive is used which suits the particular wall background and service conditions. Segal Tiles recommends that water resistant adhesives are used for wet areas and grouted with a water impervious grout.

→ CUTTING LARGE FORMAT WALL TILES.

The high quality white body of the Segal tiles large format wall tiles can be cut, shaped and drilled in the same manner as the smaller format wall tiles. The use of a heavier gauge floor tile cutting tool is used to facilitate the cutting process due to the thicker Gauge of format the wall tiles body. For intricate shaping and cutting. Color Tile recommended the use of wet diamond wheel cutting machine.

→ HANDLING LARGE FORMAT WALL TILES.

Large Format wall tiles are heavy and particular care should be taken when lifting and handling the tiles to avoid injury. Any carton banding used to stabilize to carton whilst in transit should be removed prior to lifting and opening the cartons. The transit banding should not be used to lift The Cartons.

→ TILE SIZES.

All sizes given in this brochure are nominal sizes quoted as the nearest metric modular size. All dimensions are in millimeters. For details of actual work sizes please refer to the Product detail given on the carton.

→ IMPORTANT.

During the course of manufacture of all ceramic tiles some variation in shade in shade of pattern can occur. Before fixing wall tiles several cartons should be opened and their contents mixed to provide an attractive natural finish, an acceptable color blend and to observe the direction of patterning. Before laying floor tiles several cartons should be opened and the contents mixed to ensure that the size, shade, colour and patterning are acceptable.

Segal Tiles can not accept any liability for wall and floor tiles that have been fixed. Every effort has been made to ensure the accuracy of the information given in this brochure. In the interest of progress, however Gold Stone Tiles the right to change Specifications and availability with out prior notice. The Segal Ceramic shown on the tile Products in this brochure are as accurate as the limitations of the printing processes with allow. Please refer to actual product samples before purchasing.



Airport Terminals



Discotheques



Corridors/Halls



Industries



Gymnasiums



Hospitals



Religious Places



workshops



Hotels



Offices



Super Markets



Schools



Shopping malls



Restaurants



Domestic



Technical Specification

CHARACTERISTICS	EURO STANDARDS EN - 159 / IS 13753	OUR VALUE
DIMENSION & SURFACE QUALITY		
1. Dimension & Surface Quality	± 0.5 %	± 0.2 %
2. Deviation in Thickness	± 0.6mm	± 0.2mm
3. Straightness of sides	± 0.3%	± 0.2%
4. Rectangularity	± 0.5%	± 0.3%
5. Surface flatness	± 0.5%	± 0.3%
6. Surface Quality	min 95%	min 96%
PHYSICAL PROPERTIES		
1. Water Absorption	> 10%	14. % To 16%
2. Bending Strength	> 150 Kg /cm ²	200 -250 Kg /cm ²
3. Scratch Hardness (mohs)	min 3	min 3
4. Crazeing	1 Cycle	No Crazeing at 3 Cycles
CHEMICAL PROPERTIES		
1. Staining Resistance	Min Class 2	Resistance to All Acids And Alkalies & Household Chemical, Except Hydro Flourish Acid
2. Household Chemical	Min Class B	
THERMAL PROPERTIES		
1. Thermal Shock	Resistant to 10 Cycles	CONFORMS

Packing Details

Size (mm)	No. Of Tiles Per Box	Thikness(mm)	Area Coverage (Sq.m)	Weight Per Box (Kg.)
246 x 450	6 Pic.	8 mm	0.67	9.2 Kg.
246 x 246	11 Pic.	8 mm	0.67	9.2 Kg.

Note :

- Our conformity to the above standard is applicable only for Premium (I) quality.
- Certain amount of size, scratch, and shade variation are inherent characteristic of ceramic product. The color exhibited in the catalogue may not match exactly. They are as close to the original as printing process allows